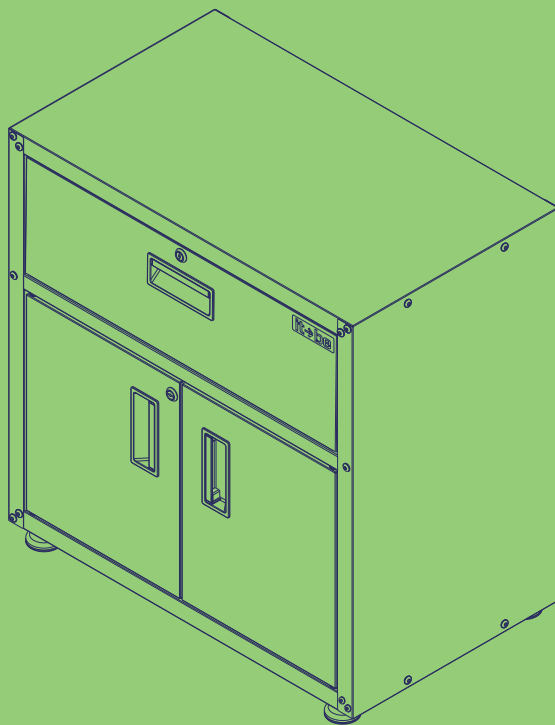


For Home Cabinet With 1 Drawer and 2 Doors Assembly Guide



Model: 3500001555 / 3500001567 / 3500001568

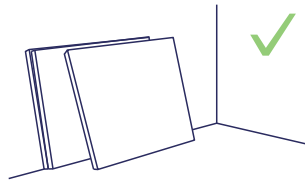
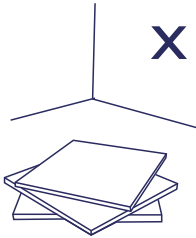
1000012237 - 08/09/2020



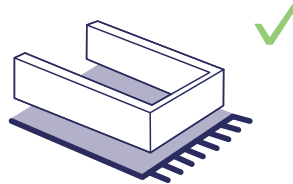
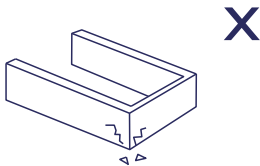
it→be

Perfectly
Funtional.

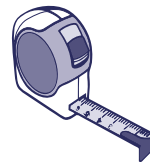
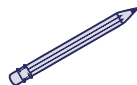
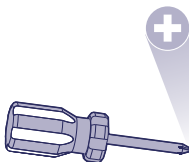
In order to ease the assembly, you should separate and identify the parts first



Do not place the parts directly onto the floor. Use a cardboard sheet or a mat to place the parts, during the separation and assembly.

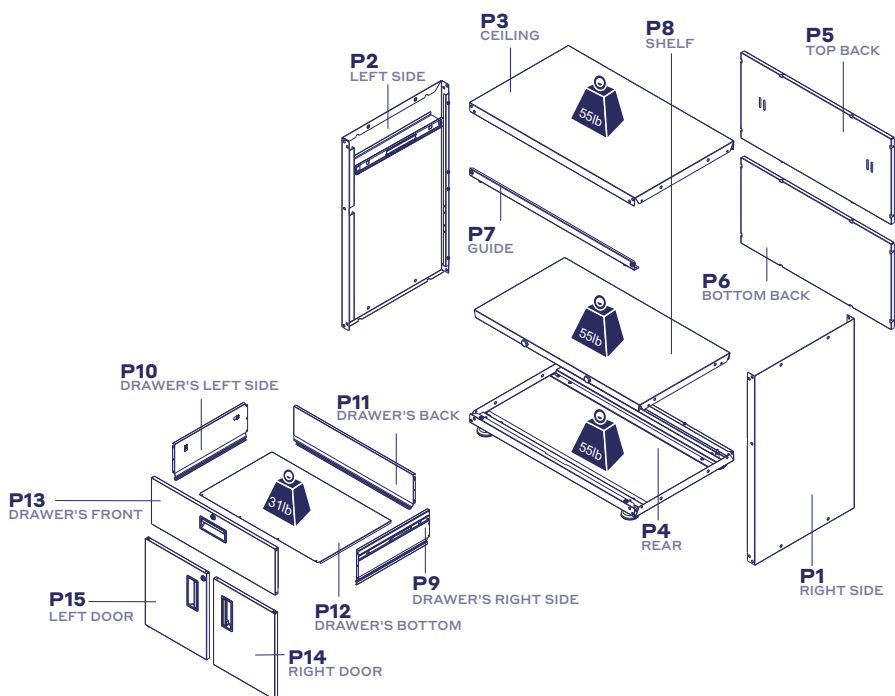


Tools Needed (not supplied)

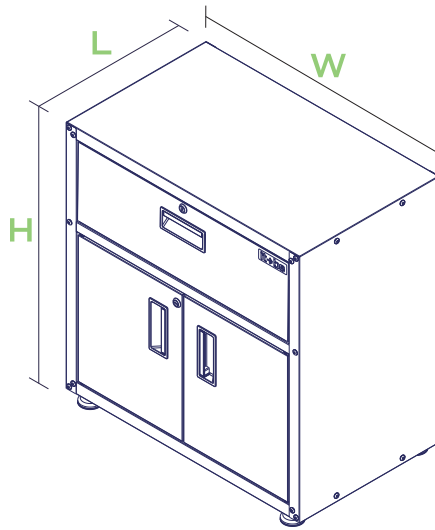


IDENTIFICATION OF PARTS

| N° | DESCRIPTION | IDENTIFY THE COLOR OF YOUR CABINET | | | MATERIAL | QUANTITY | DIMENSION | | | |
|-----|--------------------------|------------------------------------|-------------|------------|----------|----------|-----------|--------|-----------|-------|
| | | BLACK MATTE | WHITE MATTE | GREY | | | LENGTH | WIDTH | THICKNESS | |
| P1 | RIGHT SIDE | 3000010654 | 3000010578 | - | STEEL | 1 | PC | 29,96" | 18,21" | 1,82" |
| P2 | LEFT SIDE | 3000010653 | 3000010577 | - | STEEL | 1 | PC | 29,96" | 18,21" | 1,82" |
| P3 | CEILING | 3000010641 | 3000010561 | - | STEEL | 1 | PC | 30,26" | 18,11" | 1,38" |
| P4 | REAR | 3000010620 | 3000010524 | - | STEEL | 1 | PC | 30,26" | 18,11" | 1,38" |
| P5 | TOP BACK | 3000010633 | 3000010539 | - | STEEL | 1 | PC | 27,50" | 13,56" | 0,57" |
| P6 | BOTTOM BACK | 3000010592 | 3000010469 | - | STEEL | 1 | PC | 27,50" | 13,56" | 0,57" |
| P7 | GUIDE | 3000010652 | 3000010576 | - | STEEL | 1 | PC | 30,04" | 1,14" | 0,93" |
| P8 | SHELF | 3000010622 | 3000010526 | - | STEEL | 1 | PC | 30,26" | 18,11" | 1,38" |
| P9 | DRAWER'S RIGHT SIDE | - | - | 3000010672 | STEEL | 1 | PC | 16,14" | 6,79" | 0,73" |
| P10 | DRAWER'S LEFT SIDE | - | - | 3000010671 | STEEL | 1 | PC | 16,14" | 6,79" | 0,73" |
| P11 | DRAWER'S BACK | - | - | 3000010673 | STEEL | 1 | PC | 26,45" | 6,79" | 0,73" |
| P12 | DRAWER'S BOTTOM | - | - | 3000010669 | STEEL | 1 | PC | 26,41" | 16,22" | 0,40" |
| P13 | DRAWER'S FRONT WITH LOCK | 3000010647 | - | 3000010555 | STEEL | 1 | PC | 27,36" | 8,82" | 0,98" |
| P14 | RIGHT DOOR | 3000010610 | - | 3000010494 | STEEL | 1 | PC | 16,50" | 13,56" | 0,98" |
| P15 | LEFT DOOR | 3000010611 | - | 3000010495 | STEEL | 1 | PC | 16,50" | 13,85" | 0,98" |



Warning - Maximum distributed weight supported.



Assembled product:
H:32.3'' W:30.3'' L:18.1''

Hardware list

F1

1000011853



SCREW M8X12
Qty. 26

F2

1000011851



NUT M8
Qty. 26

F7

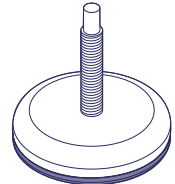
1000008301



Qty. 4x

F9

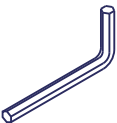
1000008368



Qty. 4

F13

1000011850



HEXAGON 5mm
Qty. 1x

F15

1000010159



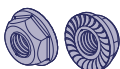
Qty. 2x

F18

1000011849



SCREW 4,8X9,5mm
Qty. 19



Locking nut, no key tightening required.

STEP 1

1 - Fit the **REAR** inside the **LEFT SIDE**.

2 - Align the two holes in the corner and screw **F1** and **F2** to it.

F1

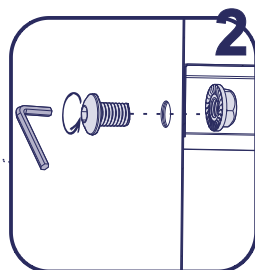
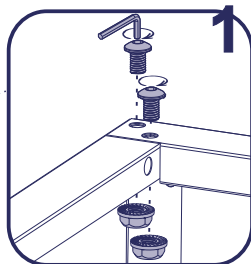
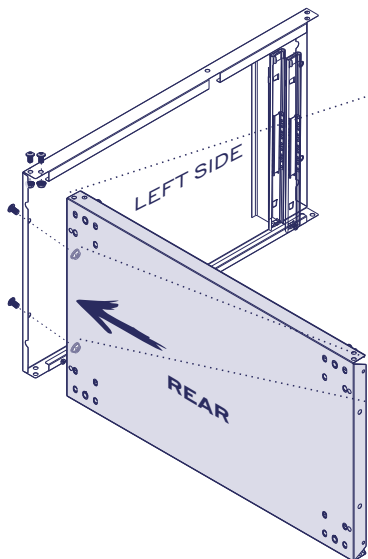


4x

F2



4x



STEP 2

1 - Fit the **REAR** inside the **RIGHT SIDE**.

2 - Align the two holes in the corner and screw **F1** and **F2** to it.

F1

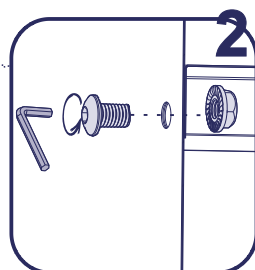
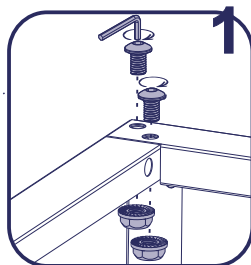
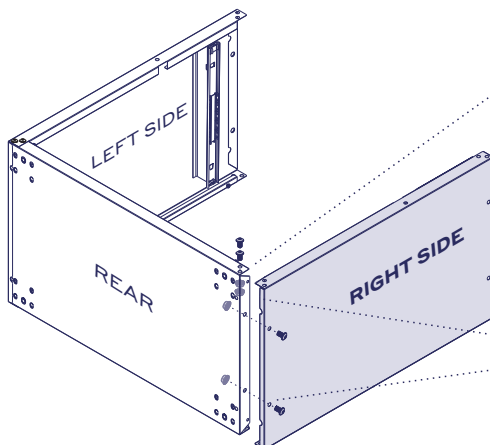


4x

F2

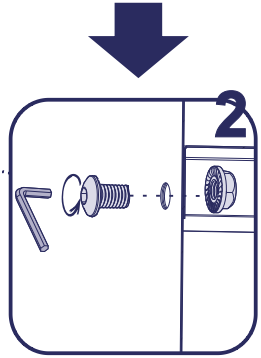
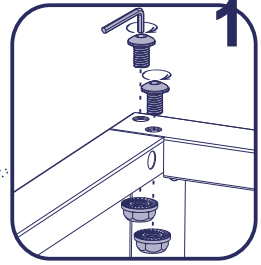
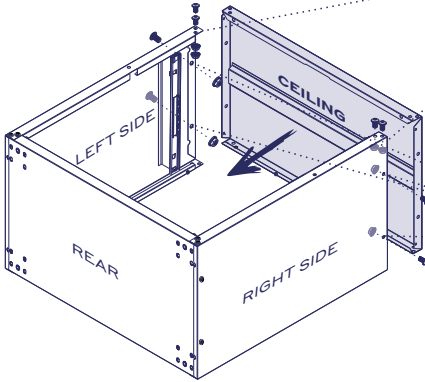


4x



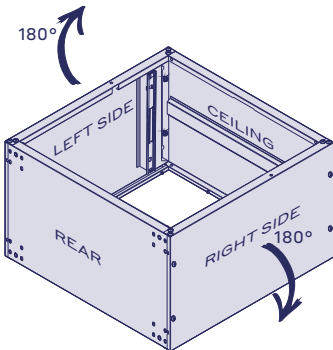
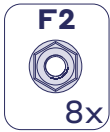
STEP 3

- 1 - Fit the **CEILING** between the **RIGHT SIDE** and **LEFT SIDE**.
- 2 - Check that all 4 tabs have been fitted.
- 3 - Fit the **CEILING** part to the corners of the **RIGHT** and **LEFT SIDES**. Align the holes and screw **F1** and **F2** to it.

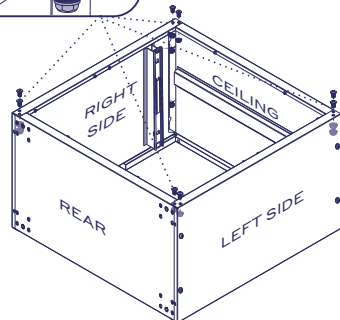
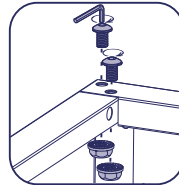


STEP 4

- 1 - Turn the cabinet with the back side upwards.



- 2 - Align the holes and screw **F1** and **F2** to it to each corners.

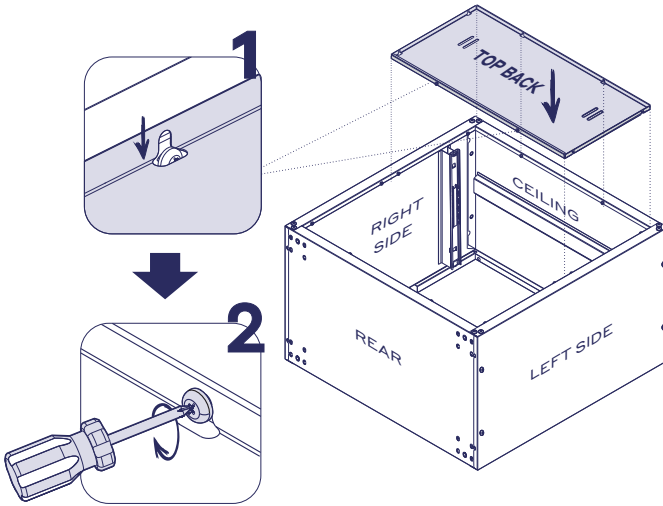


Important -

Check if all parts are correctly positioned to ensure product alignment.

STEP 5

- 1 - Fit the **TOP BACK** into parts **RIGHT SIDE**, **LEFT SIDE** and **CEILING**. Check if all parts are supported over the bolts holes.
- 2 - After fitting the parts, screw the bolts until locked.

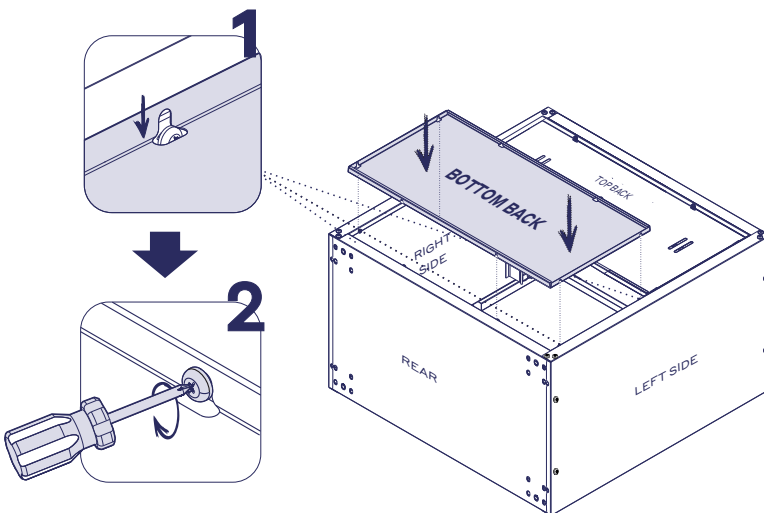


Important

Position the **TOP BACK** on the **CEILING** side to assemble the cabinet.

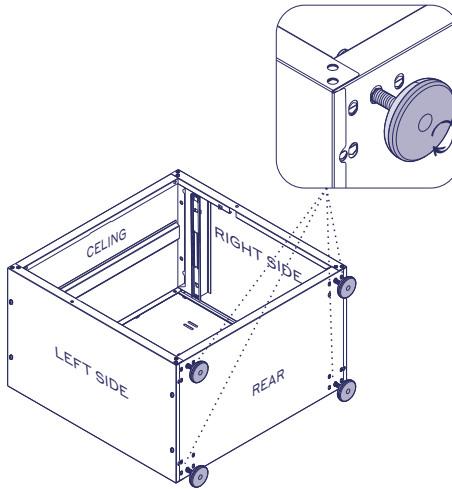
STEP 6

- 1 - Fit the **BOTTOM BACK** into the **RIGHT SIDE**, **LEFT SIDE** and the **REAR**. Check if all parts are supported over the bolts holes.
- 2 - After fitting the parts, screw the bolts until locked.



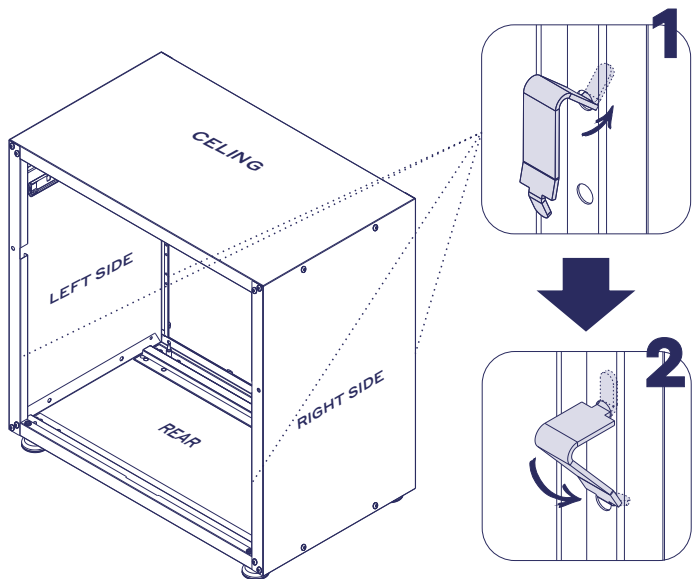
STEP 7

- 1 - Screw the leveling leg **F9** into each of the four rivet nuts located at the corners of the cabinet as shown. To level the height of the cabinet, turn the Leveling Leg either clockwise or counterclockwise to align it.



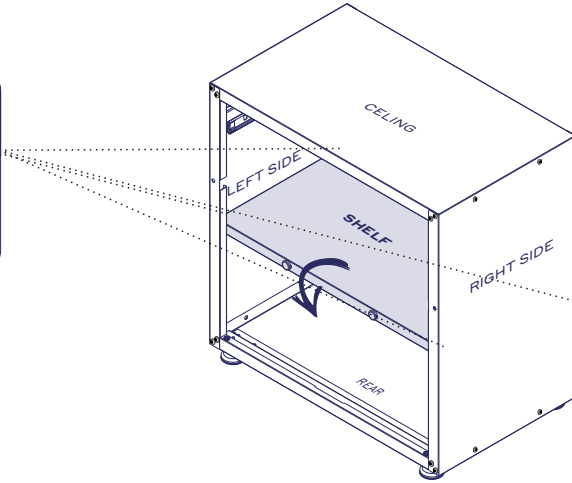
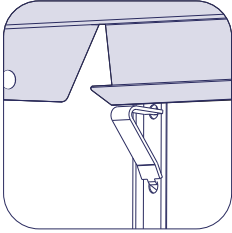
STEP 8

- 1 - Turn the cabinet so that it will stand in the position of use.
- 2 - Fix the four **F7** parts to both **SIDES** as shown below.



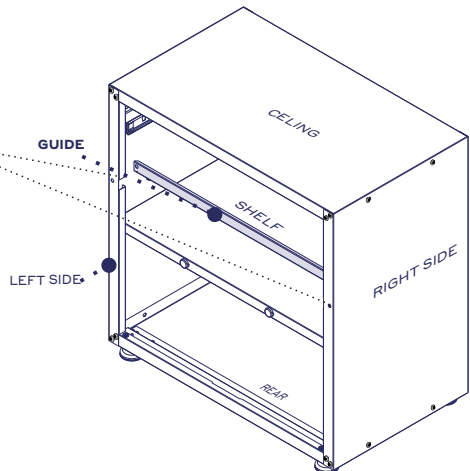
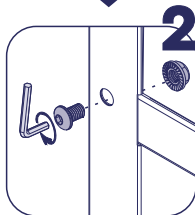
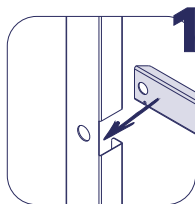
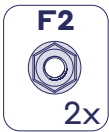
STEP 9

- 1 - Fit the lower the **SHELF** in diagonal position to insert it inside the cabinet.
- 2 - Lean the **SHELF** and place it over the **F7** fixed on the **SIDES** as detailed in the illustration below.
- 3 - Place the other side of the **SHELF**.



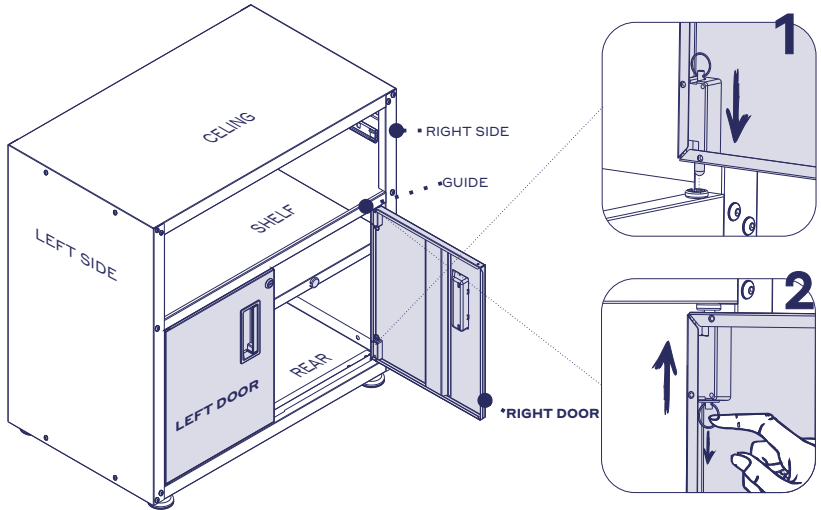
STEP 10

- 1 - Fit the **GUIDE** above the **SHELF** in the cut out parts at the **SIDES** of the cabinet.
- 2 - Align the holes and screw **F1** and **F2** to it at each corners, as illustrated (1 and 2).



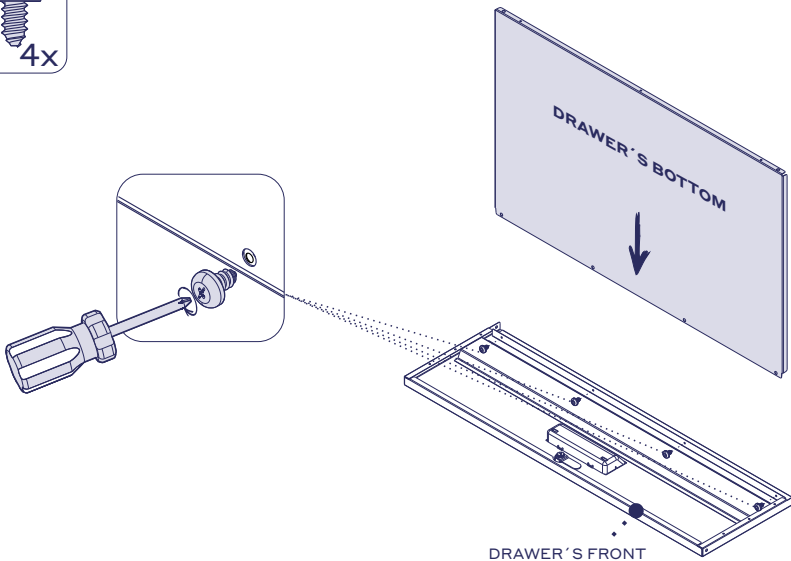
STEP 11

- 1 - To assembly the doors, fit the **RIGHT DOOR** lower hinge bolt inside the hole in the **REAR**.
- 2 - Then, pull down the pin of **RIGHT DOOR** upper hinge; align the door and release the pin to fit the hole in the **GUIDE**.
- 3 - Repeat the step for the **LEFT DOOR**.

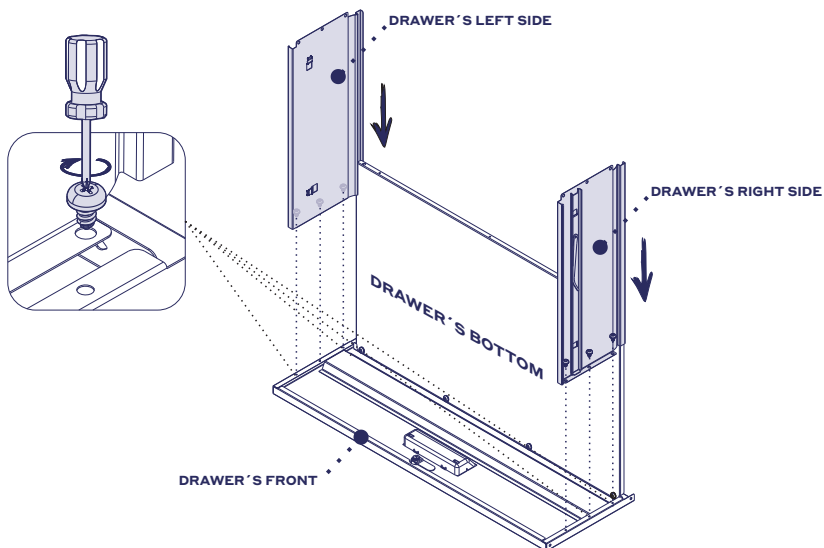


STEP 12

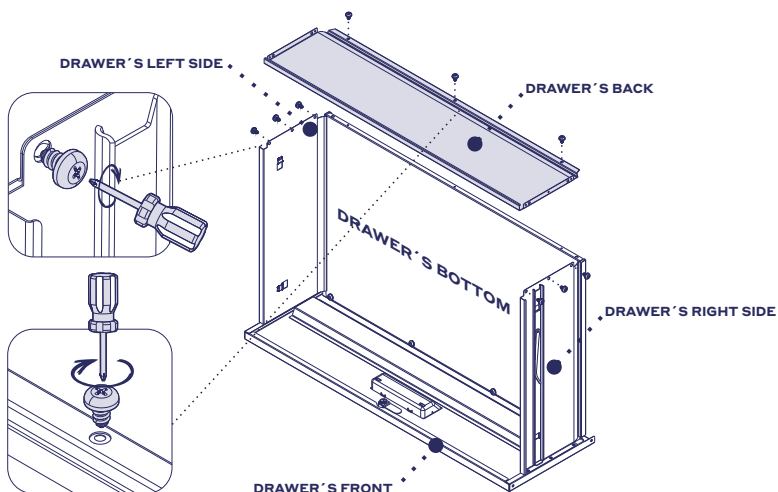
- 1 - Fit the **DRAWER'S BOTTOM** in the **DRAWER'S FRONT**.
- 2 - Screw the two parts with **F18**.



- STEP 13** → 1 - Align the **DRAWER'S RIGHT SIDE** and **DRAWER'S LEFT SIDE** to the **DRAWER'S BOTTOM**, until it leans against piece the **DRAWER'S FRONT**.
- 2 - Screw them with **F18**.

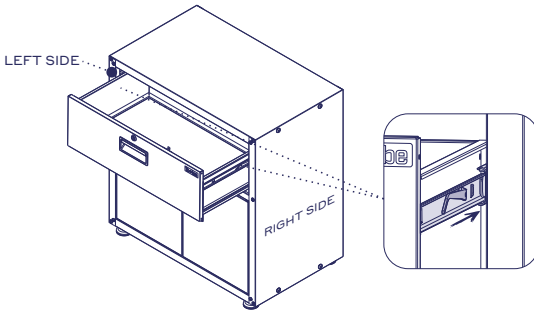


- STEP 14** → 1 - Insert **DRAWER'S BACK** over the **DRAWER'S BOTTOM** and between the **DRAWER'S RIGHT SIDE** and **DRAWER'S LEFT SIDE**.
- 2 - Then, screw the **DRAWER'S BACK** to the **DRAWER'S RIGHT SIDE**, **DRAWER'S LEFT SIDE** and **DRAWER'S BOTTOM**, with **F18**.

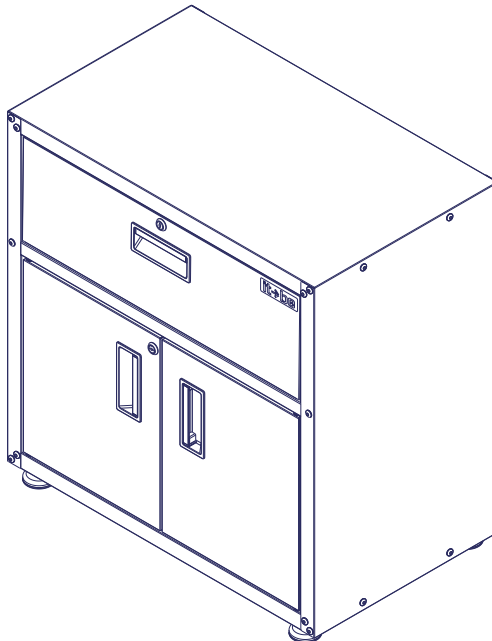
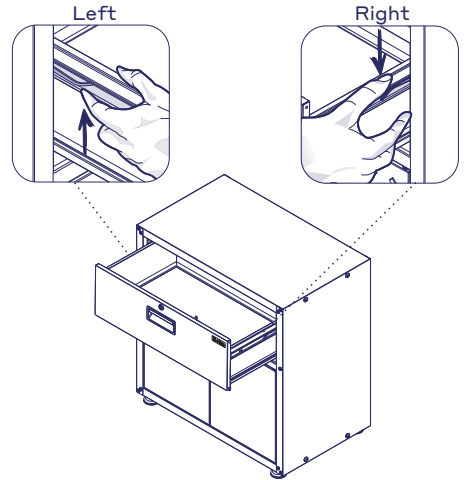


STEP 15

- 1 - Fit the drawers - already assembled-between the **RIGHT SIDE** and **LEFT SIDE**, through the drawer slides.
- 2 - Check if the drawer slides on both sides are properly fitted. If they are not properly fitted, the drawer will not close completely. Slide the drawer in and out to test it and be sure it is sliding smoothly.



- 3 - The procedure for removing the drawer is illustrated above.





WARRANTS TERMS AND CONDITIONS

ITBE PRODUCTS

This document describes the limited warranty agreement ('Warranty') regarding your purchase of ITBE's furniture and/or equipment ('Product') within USA territory. This agreement is subject to the conditions described below.

1. WARRANTY SCOPE

- 1.1.** This Warranty covers Product defects resulting from defective parts, materials or manufacturing, if such defects occur during the period of 12 months after the date of purchase.
- 1.2.** The Products are considered defective if they fails to perform the functions as indicated in the operation manuals, technical specifications or any other similar documents supplied with the Products, and the failure is due to material and workmanship defects.
- 1.3.** During the Warranty period, if a defect arises in the Product, ITBE will, at his option and to the extent permitted by law, either (i) repair the Products using either new or refurbished parts, (ii) replace the Product with a new or refurbished Product that is equivalent or similar to the Product to be replaced, or (iii) refund to Buyer all or part of the purchase price of the Product.

2. WARRANTY LIMITATIONS

2.1. This Warranty does not cover:

- i.** In-home service including, but not limited to, service calls to correct the installation of any Products or to instruct Buyer on how to use or install them.
- ii.** Damage or failure resulting from modification, alteration, misuse or abuse of a Product.
- iii.** Damage caused by a carrier or third party, including resulting from improper handling or shipping of Products, or Products damaged by accident, alteration, misuse, abuse, fire, flood, improper installation, acts of God, neglect, corrosion, modification or mishandling.
- iv.** Factory specified replacement parts or Product replacement when Buyer's Product is used in other than normal, single-family household use, such as a commercial environment or handled in a manner contrary to published user or operator instructions and/or installation instructions.
- v.** Aesthetic damages including scratches, dings, dents or cracks that do not affect the structural or functional capability of the Product.
- vi.** Damage resulting from improper loading beyond the specified maximum weight capacity outlined in the assembly instructions provided with the Product including overloading of hooks, baskets, shelves, cabinets, and other accessories used with the Product.
- vii.** Surfaces damaged due to chemical interaction resulting in corrosion of paint, metal or any treatment or cleaning product that is not recommended by ITBE.
- viii.** Color and other covering materials.
- ix.** Drawers and doors, as they may run tight or lose due to high variation in humidity and temperature in the surrounding atmosphere.
- x.** Replacement keys or locking mechanism.
- xi.** Natural wear and tear of the Product.
- xii.** Any labor costs during the Warranty period.

2.2 ITBE must be notified of any defect and given an opportunity to remedy it; any remedial work carried out by a third party will nullify this warranty.

2.3 The cost of repair or replacement under these excluded circumstances shall be borne by Buyer.



3. PROCEDURE AND EVALUATION

3.1 If Buyer has received a defective Product, Buyer must report the defect by sending an e-mail to To be able to help@itbehome.com make a warranty claim, Buyer must always present proof of purchase send a photo of the defective Product and provide a detailed description of the defect.

3.2 Buyer will receive a confirmatory email with a number code and ITBE will process the report within 2 business days. If the photo sent by Buyer is not enough to determine the cause of the Product defect, ITBE may request further explanation, carry out an on-site examination of the Product or require Buyer to send the Product to the nearest support center. If an on-site examination is necessary, Buyer must grant free direct access to ITBE's technician as needed.

3.3 If there is any doubt about whether the problem with the defective Products falls under the Warranty, the burden of proof of the existence of material and workmanship defects lies with Buyer.

3.4 Warranty services will be provided only if a material or workmanship defect is demonstrated, and the defect does not fall under clause 2.

3.5 After evaluation, ITBE will, on its discretion, either repair or replace the defective parts of the Product or the Product itself or refund the purchase price to Buyer. ITBE shall provide Buyer with a forecast of the time required for the repair or replacement of the Product.

3.6 If a product or its part has to be replaced and that particular product or part is no longer available, ITBE reserves the right to use an alternative similar product or part.

3.7 When a warranty claim is justified, ITBE will pay for shipping expenses for repairing or replacing the Product. ITBE can charge Buyer for returned Products that are not found to be defective or non-conforming, in addition to shipping-test, and handling costs associated therewith.

3.8 The warranty does not cover any costs associated with installation, removal or reinstallation of a Product, when applicable.

4. WARRANTIES AND DAMAGES

4.1 To the extent permitted by law, the Warranty and remedies set forth above are exclusive and in lieu of all other warranties and remedies. ITBE specifically disclaims all statutory or implied warranties, including, but not limited to, warranties of merchantability, fitness for a particular purpose and against hidden or latent defects.

4.2 ITBE DOES NOT PROVIDE, AND SPECIFICALLY DISCLAIMS, ANY OTHER WARRANTIES FOR THE PRODUCTS, EXPRESS OR IMPLIED, INCLUDING ANY IMPLIED WARRANTY OF MERCHANTABILITY OR FITNESS FOR A PARTICULAR PURPOSE. ITBE SHALL NOT BE LIABLE FOR OR OBLIGATED IN ANY WAY TO PAY CONSEQUENTIAL OR INDIRECT DAMAGES, INCLUDING, WITHOUT LIMITATION, LOSS OF PROFITS, FINES OR LEGAL ACTIONS BY THIRD PARTIES. IN ANY EVENT, ITBE'S LIABILITY AS RELATED TO THE SUPPLY OF THE PRODUCT SHALL NOT EXCEED THE AMOUNT EFFECTIVELY PAID BY THE BUYER.

4.3 ITBE is not obliged to notify any Buyer, or future Buyer, after a certain date about any possible amendments or the non-applicability of this limited warranty regarding the supplied Products. The Warranty as described below is subject to the limits and other conditions described herein.


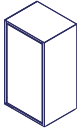


Keep this booklet and your proof of purchase together for future reference. You will need to provide proof of purchase to obtain service under warranty.

Write the following information regarding your Product to help you get Better assistance or service should you ever need it.

You should have the complete model number. You can find this information on the label that is located in the package, as an example below:

1234564510000
COPY THIS NUMBER

| | | | |
|--|----------|---|--------------------|
| ITBE | | PRODUCT IDENTIFICATION | |
| 0001/0003 | 00000000 | 00/00/00 | 1 1234564 510000 0 |
| PD 1P-35 ITBE EASY FIT BRM/BRM | | PACKED SIZE: GROSS WEIGHT: VOL/UNIT: | |
|  7892946315555 | |  Assembled Product 13.77" X 25.19" X 11.22" IN | |

Distributor name _____
 Address _____
 Phone number _____
 Model number _____
 Serial number _____
 Date of purchase _____

Need Help?



Any questions on the assembly?

Contact us.

help@itbehome.com

it→be

itbehome.com